



C0 SERIES

INDOOR HIGH DEFINITION TRANSPARENT LED DISPLAY

-FRONT LIGHT EMITTING



C0 - Specification

Item	P3.91	
Pixel pitch	3.91*7.82mm	
Led type	SMD 3 in 1	
Pixel density	32768 pixels/m ²	
Module dimension	250*250mm	
Cabinet dimension	500*1000mm	500*500mm
Cabinet resolution	128×128	128×64
Cabinet weight	6.5kg	3.5kg
Transparency rate	50%	
Cabinet material	Aluminum	
Access	Rear access	
Gray scale	14bit	
Color temperature	3500-9000k	
Gamma adjustment	1-2.8	
Brightness adjustment	0-255	
Viewing angle	H 160° , V160°	
Refresh rate	1920-3840Hz	
Brightness	3500nits	
Driving method	1/8S	
Power supply	AC100-240V	
Max. Power consumption	500W/m ²	
Avg. Power consumption	150W/m ²	
Ingress protection	IP30	
Working temperature	-20°C ~50°C	
Storage temperature	-30°C ~80°C	
Working humidity	0%~90%	
Storage humidity	0%~95%	



C0 series

A more surprising way to advertise

C0 transparent LED display is born for glass wall, it displays videos or images while maintains room lighting. C0 featuring ultra-thin, high transparency, and quick installation. It provides infinite possibilities for more creative display to surprise your customers.

Application:

Shopping mall, shop-window, exhibition, indoor event, creative display, etc.

Features



Slim cabinet



Ultra light cabinet



High transparency



Whisper-quiet operation



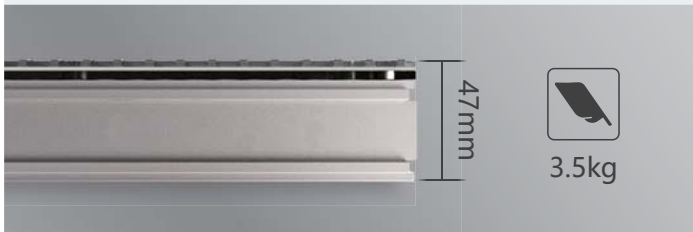
High gray scale



Shadow elimination



Easy installation



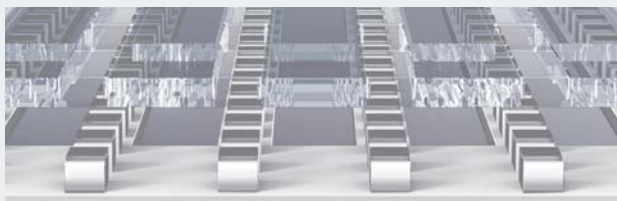
● Thin and light

The surface of C0 cabinet is finely polished and oxidized with silver color. C0 cabinet measures 47mm thick and weighs only 3.5kg



● Aluminum wrapped angle, stronger structure

The four corners of C0 cabinet are made of aluminum, it is light but extremely precise and strong. The cabinet assembly is accomplished by fixed-point fixtures with accuracy up to 0.2mm.



● Embedded PCB, zero light leakage

With a groundbreaking layout design, PCB is embedded inside the diode board directly, it not only ensures safety and reliability of PCB and diodes, but also protects the environment from light pollution.

Hz **3840** Hz



● Row-and-column shadow elimination, industry-leading display performance

Powered by shadow elimination chip, C0 delivers vibrant images or videos without any shadow. With an extremely high refresh rate of 3840Hz and gray scale of 14 bit, no flicker or black line could be captured by camera.





● Concave and convex aluminum structure

The top and bottom of C0 cabinet are designed to be concave and convex respectively, it protects module from damage while it is placed on ground and improves efficiency of cabinet assembly. The same feature is also brought to left and right side of C0 cabinet.

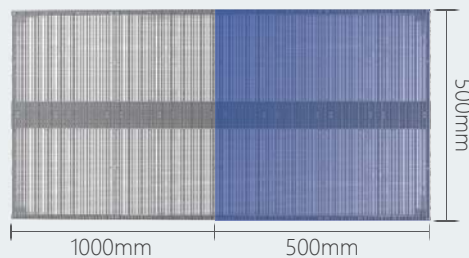


Smart module are able to:

- . Work by independent identification
- . Store calibration data
- . Monitor running time
- . Synchronize data

● Smart module

Data is auto to individual modules resulting in no need to manually calibrate when replacing with spare module supplied.



● Flexible in design and installation

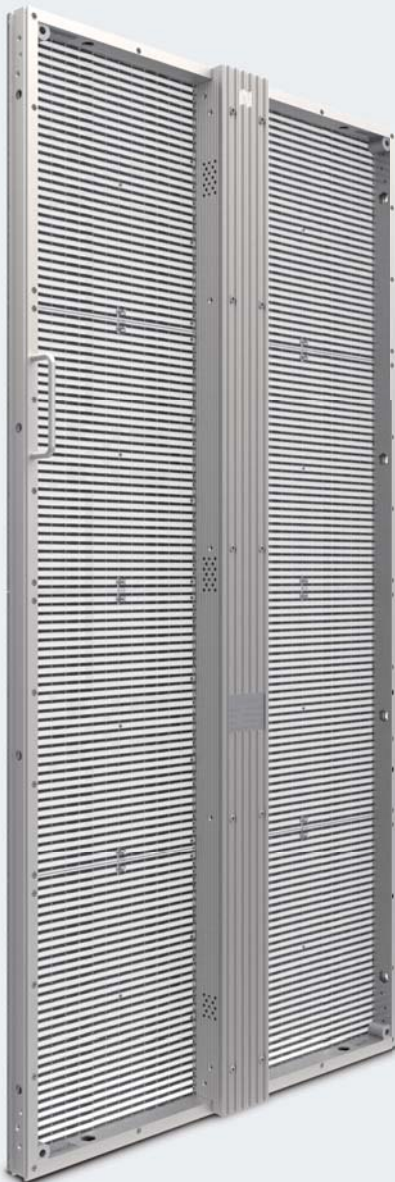
Apart from standard cabinet size, C0 transparent LED display offers flexibility of design and shape to deliver a truly bespoke and inspirational installation.

**C0 standard cabinet size: 500mm x 500mm
500mm x1000mm**



● Whisper -quiet operation

Amazing self-ventilation quality, excellent heat dissipation, fanless design and super energy efficient collectively results in whisper-quiet operation and longevity if live.



**INDOOR TRANSPARENT LED DISPLAY
-FRONT LIGHT EMITTING**

C0

HIGH-END LED DISPLAY SOLUTION PROVIDER



www.yaham.com



YAHAM

Yaham Optoelectronics Co., Ltd.

Tel: +86-755-2950-3560

Fax: +86-755-2675-5760

Web: www.yaham.com

Email: sales@yaham.com

Address: 118 Yongfu Road, Fuyong,
Baoan District, Shenzhen, 518103, China

